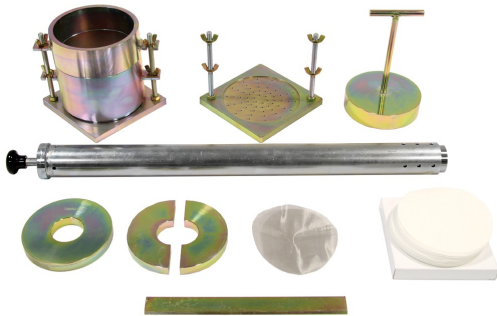


DATA SHEET

CBR Equipment, EN Version



EN CBR mould set (partial)

General description

This method is used for the laboratory evaluation of subgrade and subbase coarse materials in road construction. To perform this type of test, we propose moulds with various accessories listed in the table below and manual compaction rammers. Different models are available conforming to the various relevant specifications. In this section moulds, suitable accessories and rammers conforming to EN are shown.

An alternative (and preferable) method of compacting is to use an automatic compactor. For more information, see link to other products below.

The CBR penetration test can be performed with a number of loading presses, some of them specifically designed for CBR tests, and others with multiple applications (Universal models), at different levels of sophistication. See link to other products below.

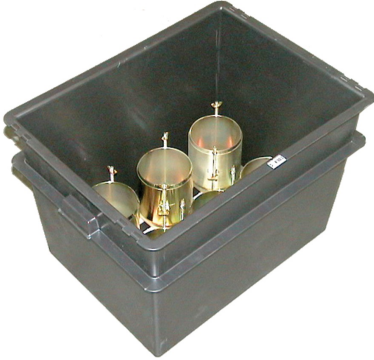
Standards

- EN 13286-47



DATA SHEET

Gauge tripod 34-T0093 with dial gauge 82-D1255 and swell plate 34-T0092



Soaking tank 34-T0100/B with CBR moulds



Universal extrudel model 16-T0080 with 6" mould

Products

33-T0071/EN

Proctor/CBR cylindrical test mould, 150 mm dia., conforming to EN 13286-2 and EN 13286-47

33-T0071/ENS

Proctor cylindrical test split mould, 150 mm dia, conforming to EN 13286-2

Accessories and consumables

33-T0076/E

EN Proctor rammer (medium energy)

33-T0077/E

EN Proctor rammer, high Energy, 15 kg

34-T0090/3

Filter screen

34-T0094/B

BS annular surcharge weight 2 kg

DATA SHEET

34-T0095/B

BS split surcharge weight 2 kg

33-T0071/EB1

Perforated steel base plate for 33-T0071/EN

34-T0091/E

Spacer disc with T handle, 149.5 mm dia. x 36 mm height